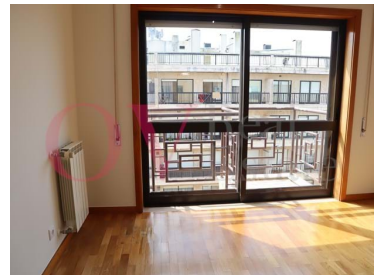





## Matosinhos e Leça da Palmeira - Apartment



 1  
Bedrooms

 1  
Bathrooms

 56,5  
Area (m²)

**875 € / Month**  
(EUR €)

**1 bedroom apartment for rent with good areas, sun exposure south and west 5 minutes from the sea, next to the schools of Leça da Palmeira**

1 bedroom apartment for rent in Leça da Palmeira next to the schools...

The apartment stood out for its good location (5 minutes walk from the sea), good areas, very good sun exposure, in a quiet area of Leça da Palmeira.

The apartment is inserted in a building with 2 elevators.

Features of the apartment:

- . Entrance hall
- . Living room with balcony
- . Kitchen



**Geral OV Real Estate**

916145002 <sup>2</sup>

geral@ovrealestate.pt

**T +351 916 145 002 <sup>2</sup> · T +351 910 589 230 <sup>2</sup> · E geral@ovrealestate.pt**

**Rua Dom Nuno Álvares Pereira 290, Piso 2, Sala BH Matosinhos  
AMI 20811**

<sup>1</sup> (Call to national fixed network) | <sup>2</sup> (Call to national mobile network)



- . Marquee
- . Room with wardrobe

## Property Features

- Built year: 1998
- Laundry
- Views: Sea views, City view, Urbanization view
- Lift
- Main drainage
- Quiet Location
- Gas fire
- Security door
- Mains water
- Floors: 4
- Conservatory
- Video entry system
- Double glazing
- Walking distance to beach
- Central location
- Parking space
- Solar orientation: South, West
- Balcony



**Geral OV Real Estate**

916145002 <sup>2</sup>

geral@ovrealestate.pt

**T +351 916 145 002 <sup>2</sup> · T +351 910 589 230 <sup>2</sup> · E geral@ovrealestate.pt**  
**Rua Dom Nuno Álvares Pereira 290, Piso 2, Sala BH Matosinhos**  
**AMI 20811**

<sup>1</sup> (Call to national fixed network) | <sup>2</sup> (Call to national mobile network)