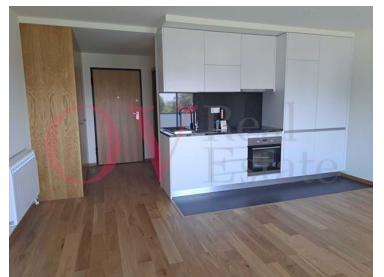




Matosinhos e Leça da Palmeira - Apartment



1

Bathrooms



45

Area (m²)

800 € / Month

(EUR €)

New T0 apartment for rent in front of the car park of Hospital de S João and Go Gym Porto

New T0 apartment for rent in front of the parking lot of the Hospital de S João and the Go Gym Porto, at Rua Dr. Barros nº 301.

3 minutes from Pingo Doce and 3 minutes from MCDonald's of the ring road.

We are waiting for you to visit, contact us...

Features of the apartment:

- . Opensape living room with kitchen
- . Full toilet with shower base



Odete Vasconcelos

916145002 ²

odete.vasconcelos@ovrealestate.pt

T +351 916 145 002 ² · T +351 910 589 230 ² · E geral@ovrealestate.pt

**Rua Dom Nuno Álvares Pereira 290, Piso 2, Sala BH Matosinhos
AMI 20811**

¹ (Call to national fixed network) | ² (Call to national mobile network)



Property Features

- Washing machine
- Fitted wardrobes
- Proximity: Shopping, Restaurants, City, Hospital, Pharmacy, Public Transport, Schools, Playground
- Floors: 1
- Video entry system
- Double glazing
- Main drainage
- Security door
- Energetic certification: A
- Mains water
- Air conditioning
- Equipped kitchen
- Built year: 2023
- Views: Countryside views, City view, Urbanization view, Garden view
- Lift
- Electric shutters
- Central location
- Uninterrupted views
- Solar orientation: East
- Balcony



Odete Vasconcelos

916145002 ²

odete.vasconcelos@ovrealestate.pt

T +351 916 145 002 ² · T +351 910 589 230 ² · E geral@ovrealestate.pt
Rua Dom Nuno Álvares Pereira 290, Piso 2, Sala BH Matosinhos
AMI 20811

¹ (Call to national fixed network) | ² (Call to national mobile network)